



“Botanical Beauty”

2016 Block of the Month Quilt

An Original Quilt Designed by TK Harrison from BOMquilts.com

Brought to you by BOMquilts.com, Camelot Fabrics, The Warm Company & Aurifil Thread



BOMquilts.com



**Botanical Beauty
Block #9
October 20, 2016**

“Botanical Beauty” features rich and luxurious fabrics with blocks designed to add a touch of whimsy with basic modern flares!

www.BOMquilts.com

Finished Quilt = 70" x 85"

Finished Blocks for Quilt = 15"

Unfinished Blocks for Quilt = 15 1/2"

Fabric: “Botanical” designed by Alisse Courter from Camelot Fabrics

Find a quilt shop who carries the “Botanical” fabric at

www.camelotfabrics.com/find-a-store

Purchase Aurifil Thread from Aurifil

Find a shop to purchase Warm & Natural batting from www.WarmCompany.com

All Seams a precise 1/4" ~ Press in the direction of the arrows.

Read ALL Instructions Before Beginning

These cutting instructions are for the “Botanical Beauty” Block #10:

Fabric	Cutting Instructions
Twig in Iron	Cut TWO (2) 2" x 15 1/2" strips
Twig in Iron	Cut TWO (2) 2" x 12 1/2" strips
White	Cut TWO (2) 2" x 12 1/2" strips
White	Cut TWO (2) 3 1/2" x 9 1/2" strips
Twig in Jade	Cut ONE (1) 3 1/2" square
Tossed Flowers in White	Cut ONE (1) 4 2/4" x 7 1/4" strip
Tossed Flowers in White	Cut ONE (1) 3 1/2" x 4 1/4" strip
Tossed Flowers in White	Cut ONE(1) 2" x 7 1/4" strip
Tossed Flowers in White	Cut ONE (1) 2 3/4" x 9 1/2" strip



Aurifil thread suggestions:

**#5605, #5158, #5975, #5865,
#5021, #5835**



**Warm & Natural Batting: Full Bed
Sized package**



“Botanical Beauty”

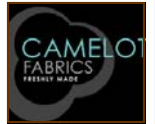
2016 Block of the Month Quilt

An Original Quilt Designed by TK Harrison from BOMquilts.com

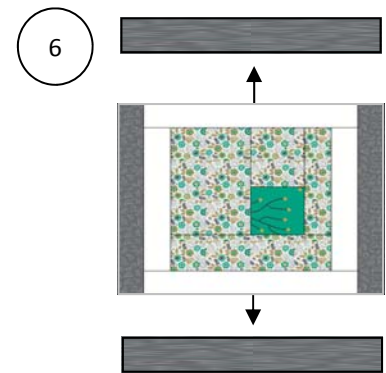
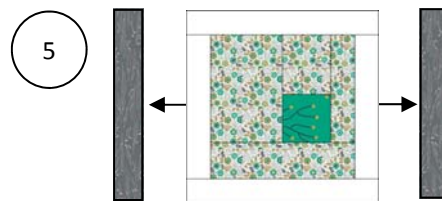
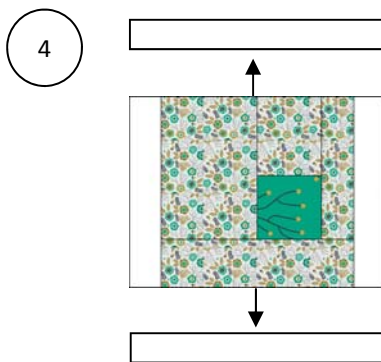
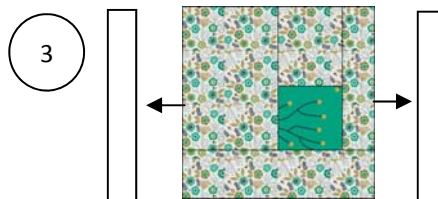
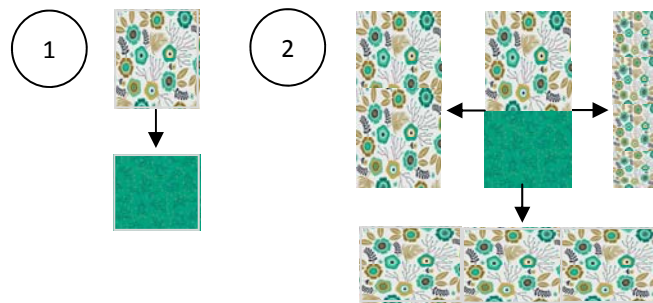
Brought to you by BOMquilts.com, Camelot Fabrics, The Warm Company & Aurifil Thread



BOMquilts.com



**Botanical Beauty
Block #9
October 20, 2016**



Aurifil thread suggestions:
#5605, #5158, #5975, #5865,
#5021, #5835



**Warm & Natural Batting: Full Bed
Sized package**