

2021 Block of the Month Quilt with a Medallion Center  
 An Original Quilt Design by TK Harrison—Owner of BOMquilts.com  
 Brought to you by BOMquilts.com & Abbi May’s Quilt Shop



**"Graceful Garden" is a traditionally pieced block of the month quilt! Featuring the “Garden Notes” fabrics, designed by Diane Neukirch, for Clothworks Fabrics**

[www.BOMquilts.com](http://www.BOMquilts.com)

Finished quilt = 81” Square

Finished Center Block for Quilt = 36” Square

Unfinished Center Block for Quilt = 36 1/2” Square

Finished Bordering Blocks for Quilt = 18” Square

Unfinished Blocks for Quilt = 18 1/2” Square

**Purchase the Quilt Kit from:**

[www.AbbiMays.com](http://www.AbbiMays.com)

All seams a scant 1/4"

Press in the direction of the arrows

**Read ALL Instructions Before Beginning**

## Part #5 – Pinwheels & Stars – Block #3

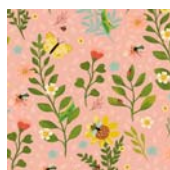


Pinwheels & Stars  
 Quilt Block  
 Make TWO (2)

Fabric requirements for the “Pinwheels & Stars” quilt blocks.



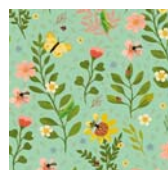
Cream Dot  
3/8 yd.



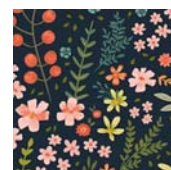
Coral  
 Medium  
 Floral  
1/4 yd.



Orange  
 Diagonal  
 Plaid  
1/4 yd.



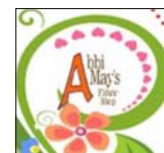
Mint  
 Medium  
 Floral  
1/4 yd.



Navy Blue  
 Large  
 Floral  
1/4 yd.

**There’ll be leftover fabrics after sewing the “ Pinwheels & Stars” quilt blocks together. Don’t toss them in your scrap bin! You’ll need them for future “Graceful Garden” quilt blocks!**

This pattern has been tested, to the best of our ability. If your block does not come out the size shown, please try adjusting your needle position to the appropriate position (left or right) to see if you get the correct block size.



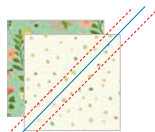
## Pinwheels & Stars – Block #3 – Cutting Requirements



Pinwheels & Stars  
 Quilt Block  
 Make TWO (2)

|                        |   |
|------------------------|---|
| Coral Medium Floral    | Cut FOUR (4) 5 3/8” squares. Then cut the squares diagonally, corner-to-corner, ONE (1) time. You’ll end up with TWO (2) triangles per square.  |
| Cream Dot              | Cut FOUR (4) 5 3/8” squares.  |
| Cream Dot              | Cut TWO (2) 7 1/4” squares. Then cut the squares diagonally, corner-to-corner, ONE (1) time. You’ll end up with TWO (2) triangles per square.   |
| Cream Dot              | Cut FOUR (4) 5 3/4” squares. Then cut the squares diagonally, corner-to-corner, ONE (1) time. You’ll end up with TWO (2) triangles per square.  |
| Mint Medium Floral     | Cut FOUR (4) 5 3/8” squares.  |
| Orange Diagonal Plaid  | Cut EIGHT (8) 5 3/8” squares. Then cut the squares diagonally, corner-to-corner, ONE (1) time. You’ll end up with TWO (2) triangles per square. |
| Navy Blue Large Floral | Cut TWO (2) 5 3/4” square. Then cut the square diagonally, corner-to-corner, ONE (1) time. You’ll end up with TWO (2) triangles.                |

### Half-Square Triangle (HST) Tutorial




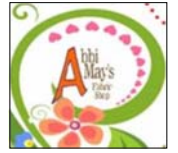
HST - Figure #1



HST Figure #2

Place the Cream Dot 5 3/8” square on the Mint Medium Floral 5 3/8” square (right sides together) and sew 1/4” on EACH SIDE of the line you drew (Figure #1). Then cut the Half-Square Triangles (HST’s) apart ON the line you drew. You’ll end up with TWO (2) Half-Square Triangles (Figure #2). Press toward the darkest fabric. Clip your corners (aka dog ears). The finished size’s a 4 1/2” square.

 **Quilt Note:** When making Half Square Triangles, try cutting your squares 1/4” or 1/2” larger than the pattern calls for, then trim them down to the exact size needed for your quilt block. You need a **total of EIGHT (8)** of these HST’s for TWO (2) “Pinwheels & Stars” quilt blocks!



## Pinwheels & Stars – Block #3 (cont.)



Pinwheels & Stars  
 Quilt Block  
 Make TWO (2)

### Flying Geese Tutorial

You’ll see on my instructions to either cut some squares one time or two times. Both of them diagonally, corner-to-corner. When piecing a Flying Geese for the “Pinwheels & Stars” quilt block, follow Diagram #1 on the left first (sewing ONE (1) Orange Diagonal Plaid triangle to the Cream Dot triangle). Then follow Diagram #2 in the center (sewing the larger second Orange Diagonal Plaid triangle to the newly created Orange Diagonal Plaid/Cream Dot triangles). Make a **total of EIGHT (8)** Flying Geese for **TWO (2)** “Pinwheels & Stars” quilt blocks! The finished size’s a 4 1/2” x 9” rectangle.

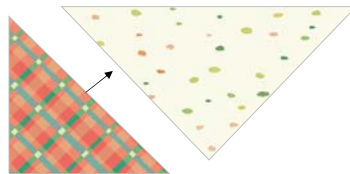


Diagram #1

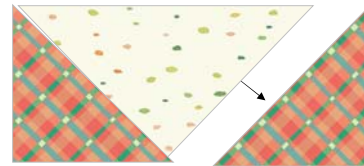



Diagram #2

 **Quilt Note:** If you’re making a lot of quilt blocks, that has a lot of Flying Geese in it, sometimes is best if you press all of your Flying Geese seams open. This cuts down on the bulky seams in the center of the Flying Geese!

### Split Half-Square Triangle (HST) Tutorial



Split HST - Figure #1




Split HST - Figure #2



Split HST - Figure #3

Sew the results of the Cream Dot 5 3/4” square to the results of the Navy Blue Large Floral 5 3/4” square (right sides together—Figure #1). Press toward the darkest fabric. Next sew the newly created Cream Dot/Navy Blue Large Floral triangle to the results of the Coral Medium Floral (Figure #2 & Figure #3). Press toward the darkest fabric. Clip your corners (aka dog ears). The finished size’s a 4 1/2” square.

 **Quilt Note:** When making Split Half-Square Triangles, try cutting your squares 1/4” or 1/2” larger than the pattern calls for, then trim them down to the exact size needed for your quilt block. You need a **total of EIGHT (8)** of these Split HST’s for **TWO (2)** “Pinwheels & Stars” quilt blocks!

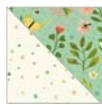


## Pinwheels & Stars – Block #3 (cont.)



Pinwheels & Stars  
 Quilt Block  
 Make TWO (2)

1



Make EIGHT (8) HST's

2



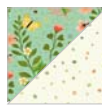
Make EIGHT (8) Flying Geese

3



Make EIGHT (8) Split HST's

4



Make FOUR (4)

5



Make TWO (2)

6



Make TWO (2)

7



Make TWO (2)

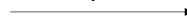
8



Make TWO (2)

Finished Size = 18" square

Unfinished Size = 18 1/2" square



Stay tuned for the “Pinwheels & Stars” – Block #3 to be revealed on  
 May 20, 2021!