

## "A Special Wreath"

2008 Free "Christmas in July" Quilt Project  
From BOMquilts.com

[BOMquilts.com](http://BOMquilts.com)



2008 Christmas in July  
at [BOMquilts.com](http://BOMquilts.com)



### "A Special Wreath" Wall Hanging

Pieced & embellished quilt blocks

Finished Size = 32 1/2" square

Block Size = 8 1/2" finished & 9" unfinished

Additional embellishments used in this "A Special Wreath" wall hanging include: red and gold stringed beads, red mini-buttons and TWO (2) sizes of Christmas tree buttons. These are optional but they sure make this wall hanging come alive!

#### Fabric Requirements for the "A Special Wreath" shown above (including Border & Binding)

Cream	1/4 yard
Dark Green	1/2 yard
Red	1/2 yard (Includes Border Cornerstones & Binding)
Christmas Fabric	1/2 yard (Includes Border)

This pattern has been tested, to the best of our ability. If your block does not come out the size shown, please try adjusting your needle position to the appropriate position (left or right) to see if you get the correct block size.

## "A Special Wreath"

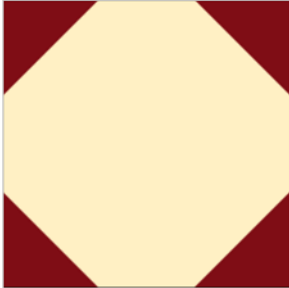
2008 Free "Christmas in July" Quilt Project

From BOMquilts.com

BOMquilts.com



2008 Christmas in July  
at BOMquilts.com



"Center Quilt Block"

Make ONE (1)

Finished Size = 8 1/2"

Unfinished Size = 9"

### Cuts Needed for ONE (1) "Center Quilt Block"

Color	Cut #1	Instruction or Cut #2
Red	Cut FOUR (4) 3 5/8" squares.	On the back side of the squares draw a diagonal line, corner-to-corner, ONE (1) time.
Cream	Cut ONE (1) 9" square.	N/A



"Side Quilt Block"

### Cuts Needed for all FOUR (4) of the "Side Quilt Blocks"

Color	Cut #1	Instruction or Cut #2
Christmas Fabric	Cut FOUR (4) 3" x 9" rectangle.	N/A
Green	Cut FOUR (4) 6 1/2" x 9" rectangle.	N/A



"Corner Quilt Blocks"

Make FOUR (4)

Finished Size = 8 1/2"

Unfinished Size = 9"

This block will be made  
using the Sew N'Slash  
Method™

### Cuts Needed for all FOUR (4) of the "Corner Quilt Blocks"

Color	Cut #1	Instruction or Cut #2
Red	Cut TWO (2) 3 5/8" squares.	Then cut the squares diagonally, corner-to-corner, ONE (1) time. You'll end up with TWO (2) triangles per square.
Red	Cut FOUR (4) 2 1/4" x 14" rectangles.	N/A
Green	Cut FOUR (4) 4 1/2" x 16" rectangles.	N/A
Cream	Cut TWO (2) 6 7/8" squares.	Then cut the squares diagonally, corner-to-corner, ONE (1) time. You'll end up with TWO (2) triangles per square.

This pattern has been tested, to the best of our ability. If your block does not come out the size shown, please try adjusting your needle position to the appropriate position (left or right) to see if you get the correct block size.

## "A Special Wreath"

2008 Free "Christmas in July" Quilt Project  
From BOMquilts.com

BOMquilts.com



2008 Christmas in July  
at BOMquilts.com



### "Corner Quilt Blocks"

Make FOUR (4)

Finished Size = 8 1/2"  
Unfinished Size = 9"

This block will be made  
using the Sew N'Slash  
Method™

## The Sew N'Slash Method™ of Creating these "Corner Quilt Blocks"

Remember to cut out all of the fabrics first & then sew them together by chain stitching them.

When sewing rectangles: Always remember to sew them in opposite directions. This will reduce the curvature of the fabrics. Follow the arrows below to understand this concept.

- 1) Sew the triangles & rectangles together. Be sure to follow the images & arrows in **Figure #1**.
- 2) Press in the direction of the smaller arrows.
- 3) Using due diligence: Cut the individual blocks out (Yellow dashed line) following the image in **Figure #2**.
- 4) All FOUR (4) "Corner Quilt Blocks" should measure exactly 9" unfinished.

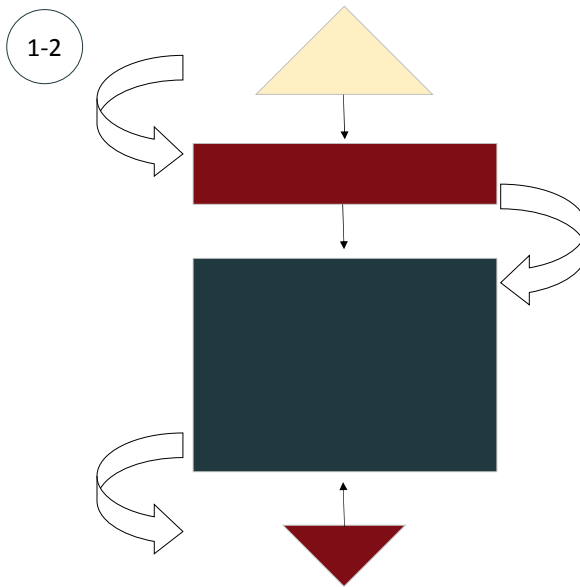


Figure #1

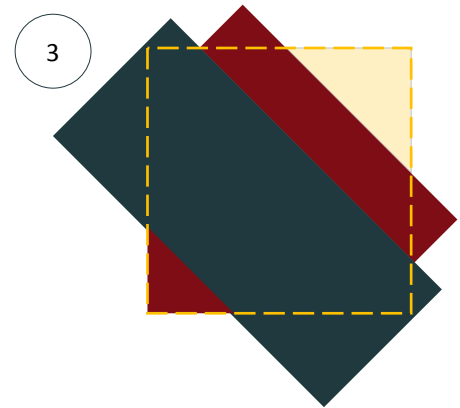
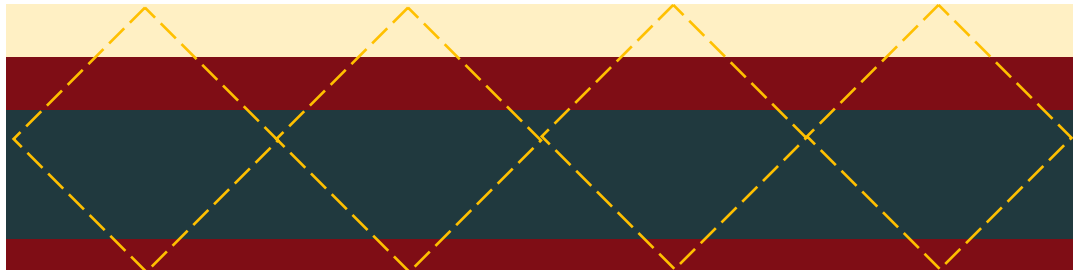


Figure #2

3

An Alternate way to Sew the "Corner Quilt Blocks" Together: Sew FOUR (4) strips of fabric (height will remain the same as in the "Cutting Instructions"). Then cut FOUR (4) 9" square "Corner Quilt Blocks" out of those strips of fabric!



This pattern has been tested, to the best of our ability. If your block does not come out the size shown, please try adjusting your needle position to the appropriate position (left or right) to see if you get the correct block size.

## "A Special Wreath"

2008 Free "Christmas in July" Quilt Project

From BOMquilts.com

BOMquilts.com



2008 Christmas in July  
at BOMquilts.com

### Snowball Corners Tutorial

My instructions will say, to cut some squares smaller & some larger. The smaller squares will say, "On the back side of the square draw a diagonal line, corner-to-corner, ONE (1) time." When piecing a portion of a quilt block that calls for Snowball Corners, gather up the larger square & the FOUR (4) smaller squares associated with it. With right sides together, line up a smaller square so that it is perfectly even with the corner & sides of the larger square. Then sew ON the drawn line (in **Figure #1** it's the red solid line).

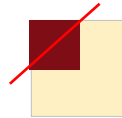


Figure #1

Next cut off the corner of the quilt block 1/4" from the sewn line (the green dashed line in **Figure #2**). Repeat the same process for the remaining THREE (3) corners (**Figure #3** below, shows how to repeat the same process on the opposite corner, than the one in the **Figure #1**). Press toward the darkest colored fabrics.

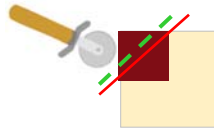
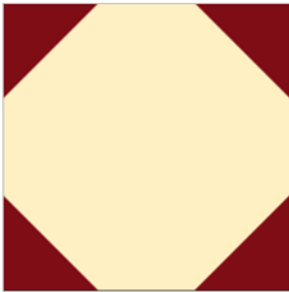


Figure #2



Figure #3



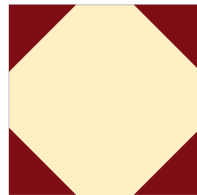
"Center Quilt Block"

Make ONE (1)

Finished Size = 8 1/2"

Unfinished Size = 9"

### Sewing the "Center Quilt Block" Together



By following along with the "Snowball Corners Tutorial" (above) the "Center Quilt Block" is easily sewn together! It only has FOUR (4) Snowball Corners that make up this quilt block.

This pattern has been tested, to the best of our ability. If your block does not come out the size shown, please try adjusting your needle position to the appropriate position (left or right) to see if you get the correct block size.

## "A Special Wreath"

2008 Free "Christmas in July" Quilt Project

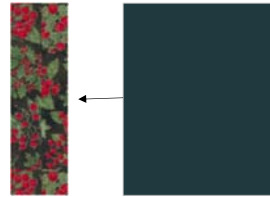
From BOMquilts.com

[BOMquilts.com](http://BOMquilts.com)



2008 Christmas in July  
at [BOMquilts.com](http://BOMquilts.com)

### Sewing the "Side Quilt Blocks" Together



It doesn't take much to sew the "Side Quilt Blocks" together!

#### "Side Quilt Blocks"

With FOUR (4)

Finished Size = 8 1/2"

### Cutting Requirements for Finishing the "A Special Wreath" Wall Hanging

Red	Cut FOUR (4) 3 1/2" squares (Border Cornerstones)
Christmas Fabric	Cut TWO (2) 3 1/2" x 30" strips. (All FOUR (4) Borders)
Red	Cut & piece FOUR (4) 2 1/2" x WOF strips (Binding)

This pattern has been tested, to the best of our ability. If your block does not come out the size shown, please try adjusting your needle position to the appropriate position (left or right) to see if you get the correct block size.

## "A Special Wreath"

2008 Free "Christmas in July" Quilt Project

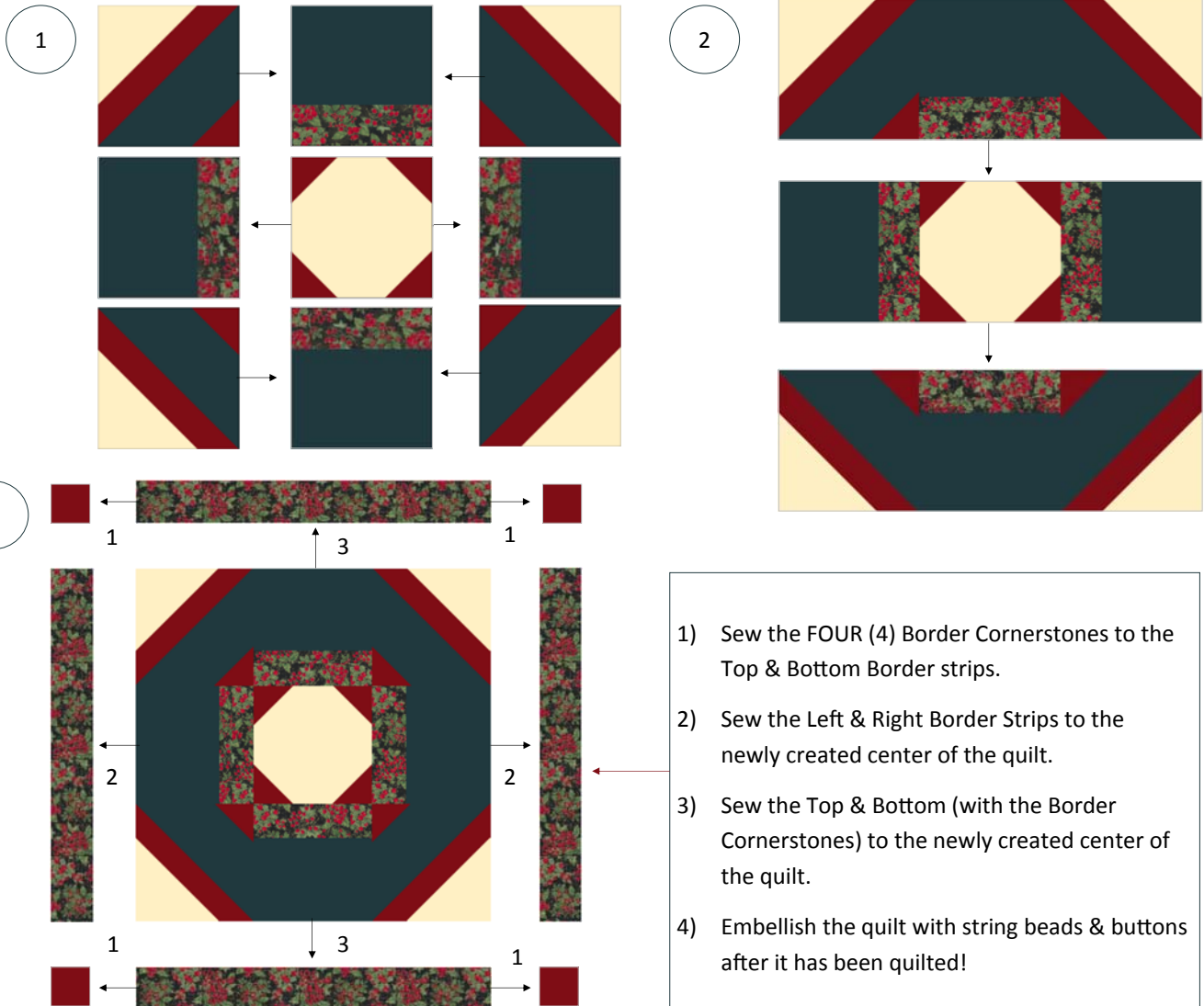
From BOMquilts.com

[BOMquilts.com](http://BOMquilts.com)



2008 Christmas in July  
at [BOMquilts.com](http://BOMquilts.com)

### Sewing "A Special Wreath" Together



Once you've sewn the "A Special Wreath" together, then quilt as desired  
& sew on your binding!

Congratulations from BOMquilts.com!

[BOMquilts.com](http://BOMquilts.com)

This pattern has been tested, to the best of our ability. If your block does not come out the size shown, please try adjusting your needle position to the appropriate position (left or right) to see if you get the correct block size.